



## AROUND THE STATE: CFP FIGHT INJURES TWO; DRUG FOOTBALL AT LCF

### An FSA and a supervisor at the Forensic Center were hurt Tuesday trying to break up a patient fight.

Three staff members tried to intervene in the altercation between two male patients. One of them, an FSA, was pushed. She hit her head and ruptured a disk in her neck. A supervisor was grabbed by the arm and thrown, tearing her rotator cuff.

There was adequate staffing at the time of the fight, an officer said, but staff members from another unit were needed to control the situation.

One of the injured employees is an FSA and the other is a supervisor. Neither has returned to work. The FSA who suffered the neck injury was hospitalized two days.

One patient is now on two-to-one coverage.

### Two people were arrested after a football stuffed with three cell phones, 40 grams of marijuana and 20 hydrocodone pills was thrown over the fence at LCF Jan. 19.

An inmate's phone call tipped off prison workers about the contraband drop.

The man who left the drugs had just been paroled out of Lakeland this month!

Other recent events at LCF:

1/12 – Prisoner sent to seg for smuggling in visiting room and substance abuse. Another prisoner went to seg for assault and battery.

1/15 – Prisoner to seg for weapon possession.

1/17 – Two prisoners to seg for fighting.

1/18 – 8-inch shank found in mop room.

1/20 – Prisoner with a cell phone and charger concealed in cracker box was walking on the yard.

1/23 – Tasers used to break up fight. One inmate had a large shank.

### At least one pop bottle filled with spud juice exploded Tuesday at ARF.

Nine bottles of spud juice were behind the pop machine in 1 Block, and one

of them exploded, possibly due to overheating. The same day, more than a dozen bottles of spud were discovered in 3 Block.

### An SRF prisoner complained of chest pains Jan. 16, but he had actually been punched and cut on his head and neck. He was treated at the facility.

Another SRF inmate was seriously stabbed Jan. 10. He was taken to a hospital for treatment.

Other events at SRF:

1/17 – Inmate found in possession of weapon. Another inmate was cut on the head while returning from

dinner. Unknown assailant.

1/18 – Several pieces of metal and weapons were found during a unit shakedown.

1/19 – Two inmates found with tattoo needles.

1/20 – Inmate in possession of weapon.

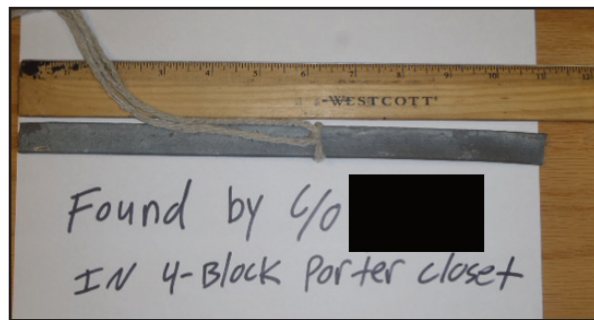
1/22 – 6-inch piece of sharpened metal found in prisoner's area of control.

1/23 – Inmate on inmate assault behind school building.

### This 11-inch steel shank was found earlier this month at MPF.

On Dec. 26, an MPF

inmate was stabbed in the neck with a pen. The inmate had minor surgery.



## CHANGES COMING TO COTTON UNITS

The I-unit at JCF will be repurposed as a temporary segregation unit and a pole barn unit is slated for closure, JCF officers have been told.

The new I-unit will house 92 beds for temp seg holding for all Jackson facilities.

A committee is being formed to discuss the transition, and MCO is arranging a meeting with the JCF warden this week to discuss ramifications.